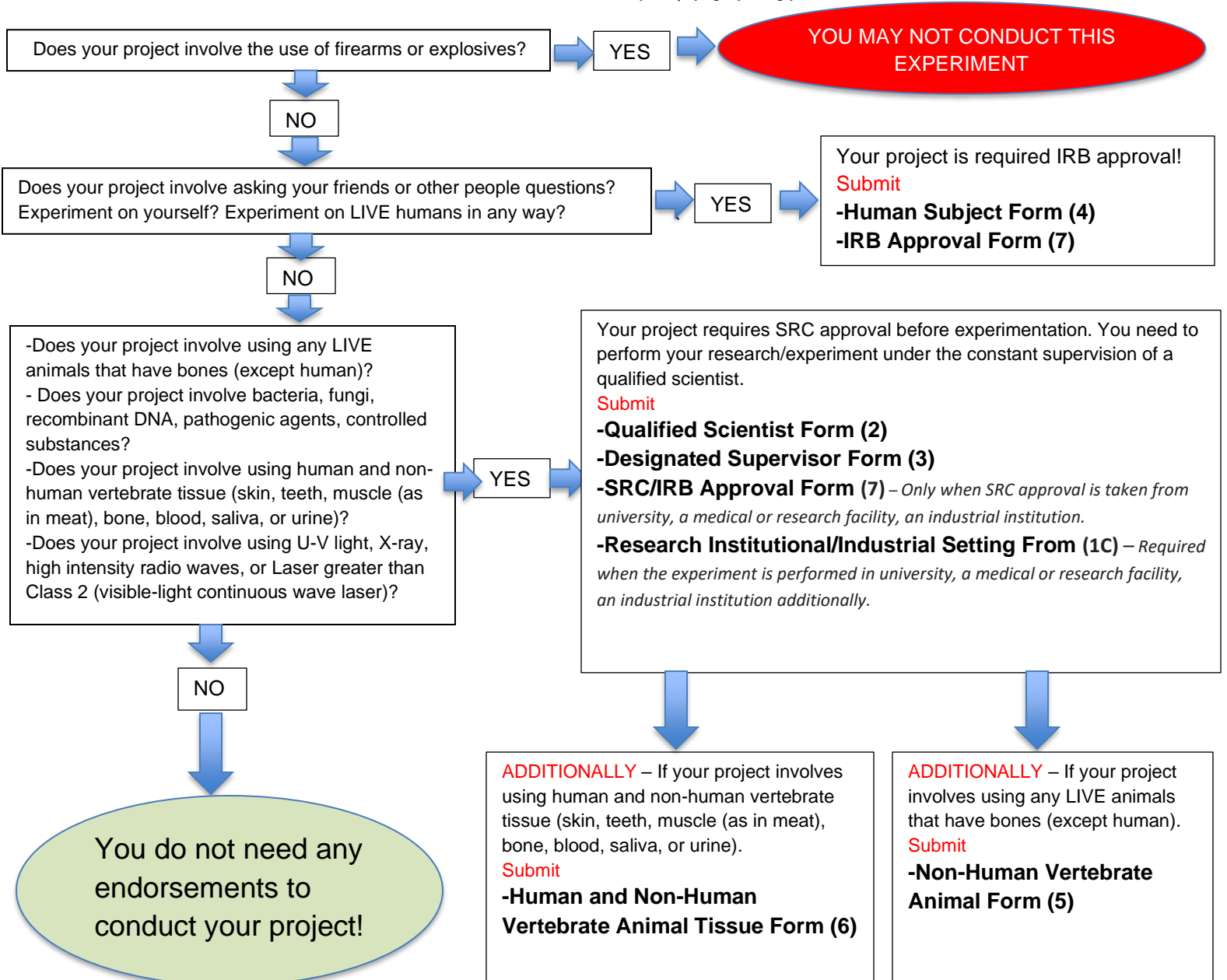


Concept Science and Engineering Fair (CONSEF) Endorsement Flow Chart
 This flow chart does NOT include all the rules regarding requests for endorsements.

Parent Approval Form (8) and CONSEF Release and Consent Form are required for all projects!!!

Detailed info: [A0UPU0ZD•^} cãQ-{| æã }](#)



- Only human blood and/or other bodily fluids (urine, saliva, tears, cerebrospinal fluid, etc.) may be used ONLY IF either purchased or obtained from a blood bank, hospital, or laboratory. No blood may be drawn, or other fluids collected from any person specifically for a science project. This rule does not preclude a student making use of data collected from tests run on blood or other fluids that were collected for a purpose other than exclusively for a science project.
- Any project involving human teeth must have the teeth sterilized prior to experimentation.
- Hairs, nails, and feathers are not needed to be treated as potentially hazardous biological agents.